

XP Repair

In previous versions of Windows, correcting an operating system error, or installing a new motherboard, usually meant formatting and reinstalling, resulting in loss of all data.

Don't worry; Windows XP repair feature won't delete your data, installed programs, personal information, or settings. It just repairs the operating system!

Note: The system repair function will remove any updates you have previously installed that are not included on the CD. Drivers will also be reverted to their original XP versions, as well as some settings (network & performance settings may sometimes be reset to their defaults). It may be necessary to reactivate your Windows XP as well. When finished, you will have to download all of the updates from Microsoft Windows Update, because they are all replaced during repair.

Why would I want to reinstall Windows XP?

- 1) Can't start Windows XP in safe mode.
- 2) You have problems caused by a recently installed system update (Windows Update, hotfix, Windows XP service pack, or Microsoft Internet Explorer update).
- 3) Your problems can't be solved with system restore, or you can't access system restore.
- 4) You've installed a new motherboard, or made other major hardware changes and need to reinstall Windows.

Let's get started!

Step 1: Rule out hardware issues. Windows Repair will only fix software problems. Hardware issues can also cause boot problems (i.e. bad hard drive, memory, CPU, or power supply).

Step 2: Backup. It's always a good idea to backup your important data before making changes to Windows XP. Relax, if you follow these instructions your data will be perfectly safe.

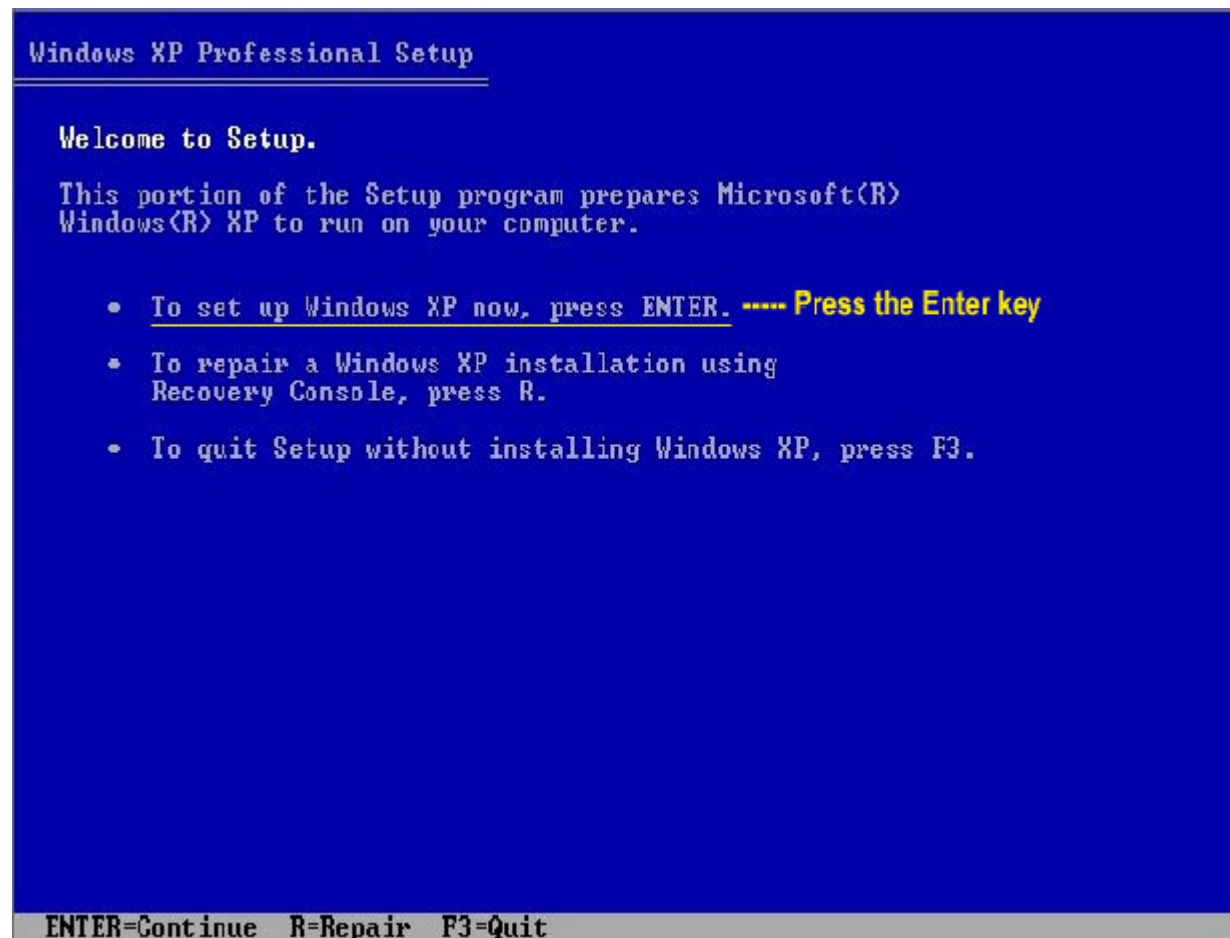
Step 3: Boot from your Windows XP CD. Insert the Windows XP CD into your computer's CD-ROM or DVD-ROM drive, and then restart your computer. When the "Press any key to boot from CD" message appears on the screen, press a key to start your computer from the Windows XP CD. Can't boot from your CD? Please see the note at the bottom of this page (Configuring Your Computer to Boot from CD).

Step 4: A blue screen will appear and begin loading Windows XP Setup from the CD.

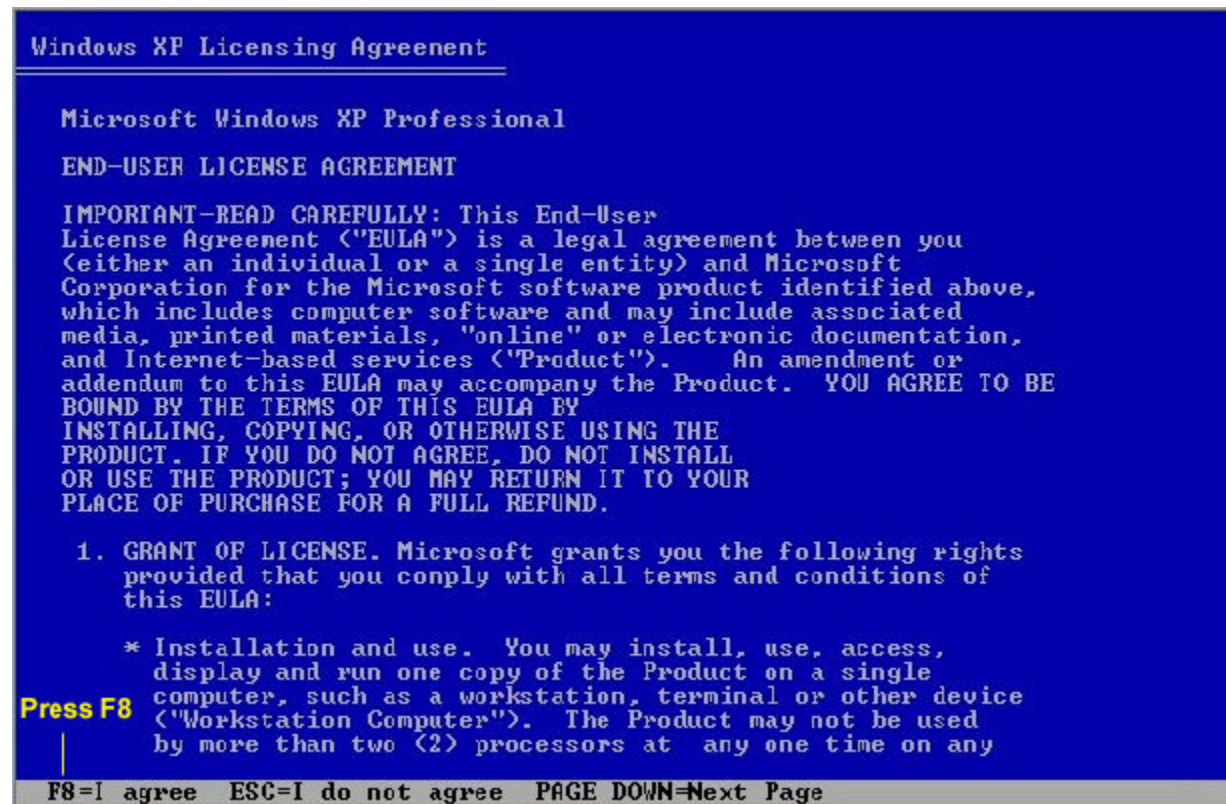
Note: RAID/SCSI/Unsupported UDMA users:

You will be prompted to "press F6 to install any third party SCSI or RAID drivers". Most users will not have to press F6, but if you are running RAID, SCSI or unsupported UDMA controllers, then you will have to have your controller drivers on a floppy disk. If you are unsure whether you have RAID/SCSI, then simply let the CD load without pressing F6.

When completed loading files, you will be presented with the following "Windows Setup" screen, and your first option. Select "To set up Windows XP now, press ENTER". DO NOT select Recovery Console.



When presented with the screen below, press the F8 key to continue.



Windows XP Licensing Agreement

Microsoft Windows XP Professional
END-USER LICENSE AGREEMENT

IMPORTANT-READ CAREFULLY: This End-User License Agreement ("EULA") is a legal agreement between you (either an individual or a single entity) and Microsoft Corporation for the Microsoft software product identified above, which includes computer software and may include associated media, printed materials, "online" or electronic documentation, and Internet-based services ("Product"). An amendment or addendum to this EULA may accompany the Product. YOU AGREE TO BE BOUND BY THE TERMS OF THIS EULA BY INSTALLING, COPYING, OR OTHERWISE USING THE PRODUCT. IF YOU DO NOT AGREE, DO NOT INSTALL OR USE THE PRODUCT; YOU MAY RETURN IT TO YOUR PLACE OF PURCHASE FOR A FULL REFUND.

1. GRANT OF LICENSE. Microsoft grants you the following rights provided that you comply with all terms and conditions of this EULA:

- * Installation and use. You may install, use, access, display and run one copy of the Product on a single computer, such as a workstation, terminal or other device ("Workstation Computer"). The Product may not be used by more than two (2) processors at any one time on any

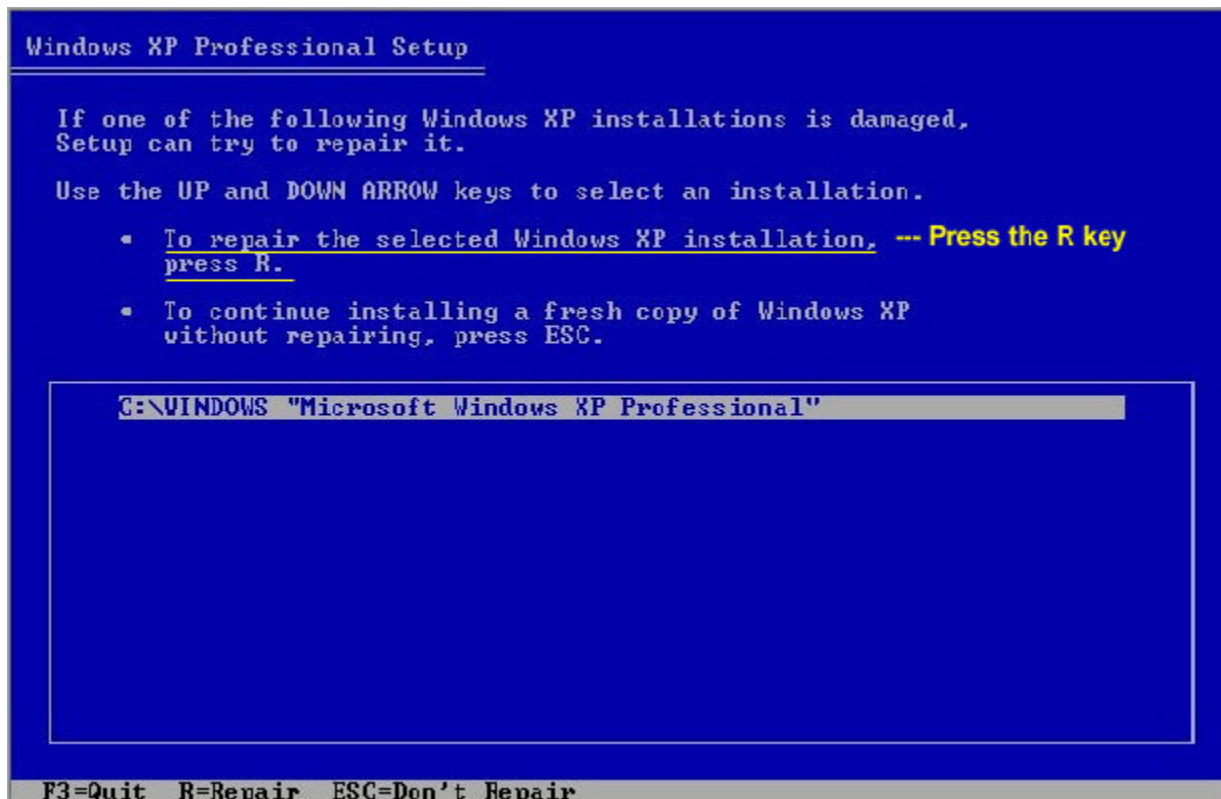
Press F8

F8=I agree ESC=I do not agree PAGE DOWN=Next Page

Next, Windows Setup will find existing Windows XP installations. You will be asked to repair an existing XP installation, or install a fresh copy of Windows XP.

If no installations are found, then you will not be given the option to repair. This may happen if the data or partition on your drive is too corrupted.

Note: If you install a fresh copy, all data on that partition will be lost!



You're almost finished! Windows XP will appear to be installing itself for the first time, but it will retain all of your data and settings. Just follow the prompts, and have your CD-KEY ready if needed.

Due to the many Worms/Viruses, be aware that a Repair Install will leave your system vulnerable. You can get infected by some of these within seconds. Do not go on line until you have enabled XP's firewall first.

Remember to run Windows Update! (Install Critical Updates First)

Configuring Your Computer to Boot from CD

Many computers are not configured to boot from the CDROM. If you cannot boot from the CDROM, this is probably due to the boot order of your devices being incorrect. You can change this in the BIOS.

You enter the BIOS from the first screen you see when you turn your computer on. To enter your BIOS, most users here will press the DEL key.

Most Dell, Toshiba, Gateway, Sony & HP systems will press F2.

To enter into a Intel motherboards BIOS, you will press F2.

Compaq users will usually have to press F10.

IBM typically uses F1 or F2.

Other brands may have different keys to press to enter setup, F1, F2, Del, Tab and CTRL+S. If possible see the manual for your computer or motherboard. Also, the BIOS will usually display which button to press to "enter setup" during POST (if it flashes by too fast, press the Pause key).

When you enter the BIOS setup, you need to change the boot order. The CDROM should be setup before the Hard Drive. Each BIOS is different, but here is an example:

BIOS SETUP UTILITY

Boot

1st Boot Device [Floppy Drive]
2nd Boot Device ↑ **Select, Move up** [CDROM]
3rd Boot Device [Hard Drive]

Specifies the boot sequence from the available devices.

↔ Select Screen
↑↓ Select Item
+- Change Option
F1 General Help
F10 Save and Exit
ESC Exit