

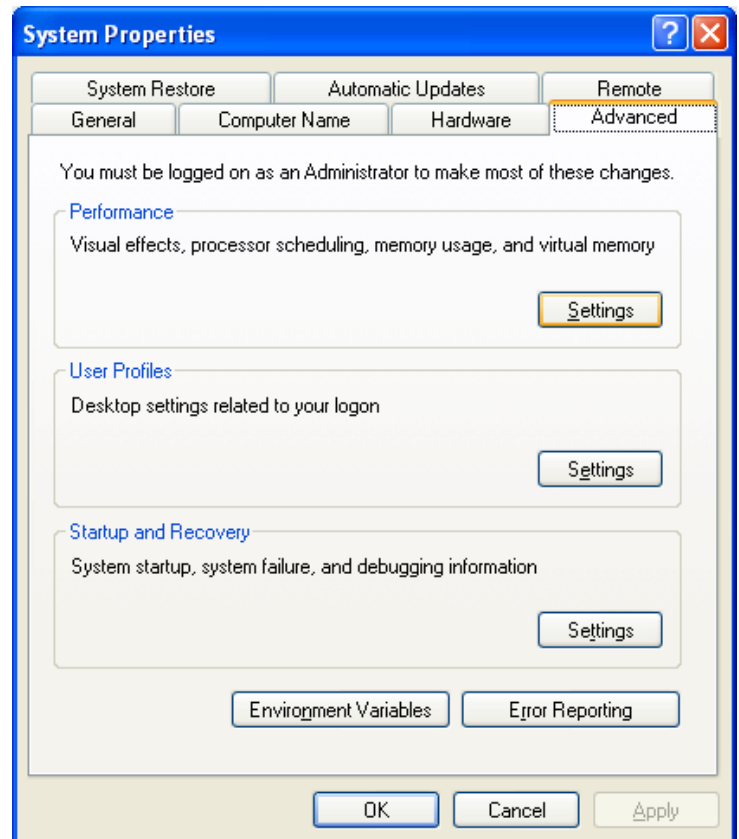
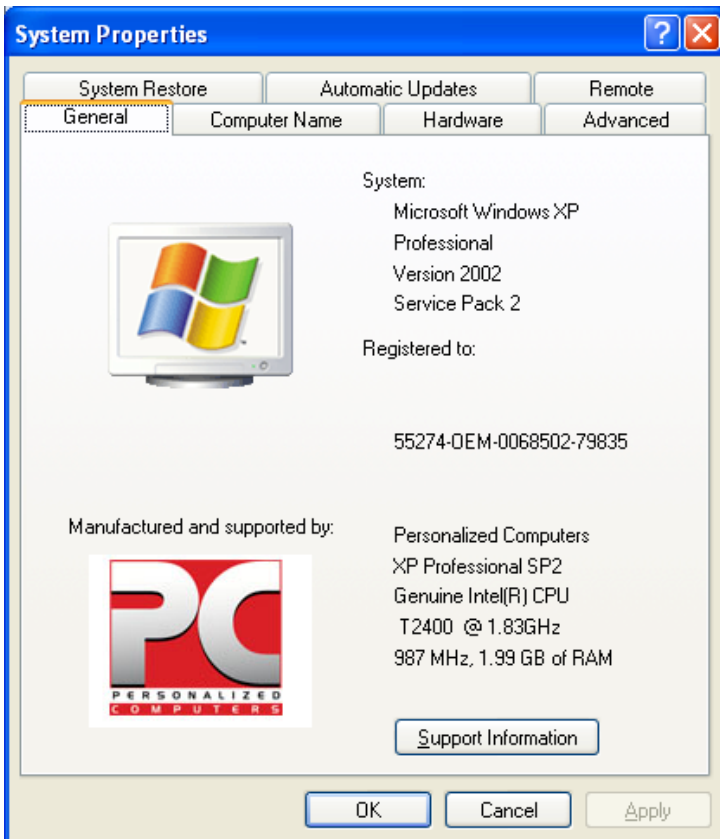
How To Change The Virtual Memory Swap File

The swap file (virtual memory) is disk memory that the Windows operating system uses to help manage applications when they exceed the amount of RAM configured in the computer. It's important that the swap file be allocated to an amount of disk space appropriate for the amount of RAM in the computer. Opinions vary on how big the swap file should be, but most state it should be at least one and a half or three times the size of the amount of RAM installed in the computer. This means if you have 512MB of RAM in the computer, the swap file should be configured to something like 1536MB of RAM. It doesn't need to be exact. The steps below show how I've allocated the swap file for one of my computers. As you can see, I've allocated about 2 times the 2048MB of RAM I have in the computer. The reason for this, is because Windows XP has a limit to how much space it can allocate, and that limit is 4GB, (or 4096MB). If you have ample hard drive space then it's a good idea to go ahead and allocate one and a half to three times the amount RAM you have installed inside your computer.

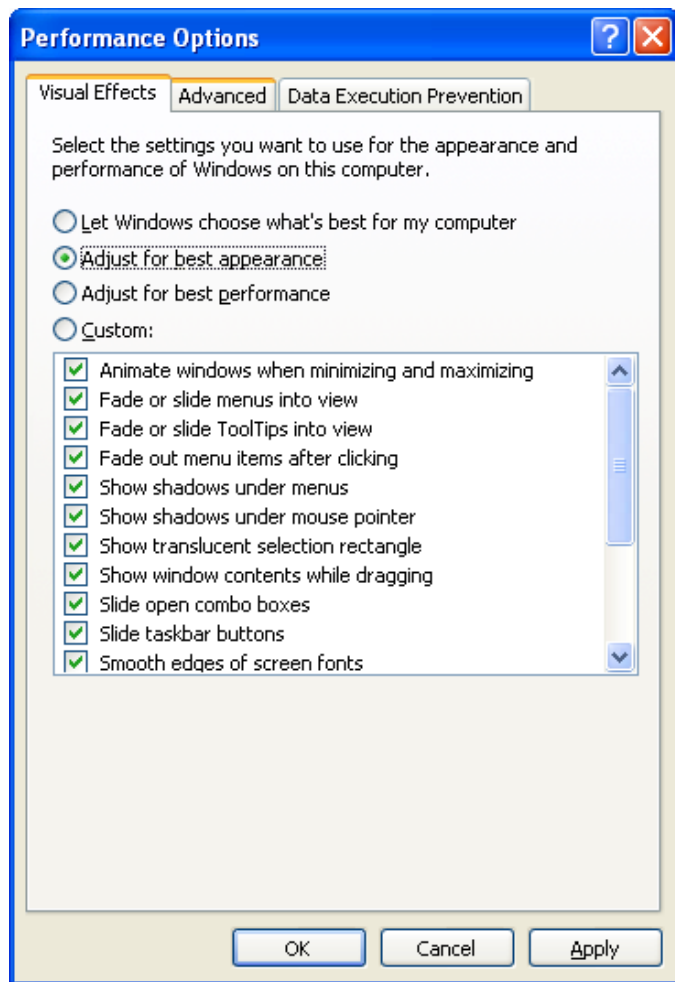
To change the size of the swap file on Windows XP, click on the Start button and then right click on "My Computer" to bring up a small pop-up menu. On this menu, click on "Properties" to bring up the System Properties window.

The System Properties window looks like this. Click on the "Advanced" tab.

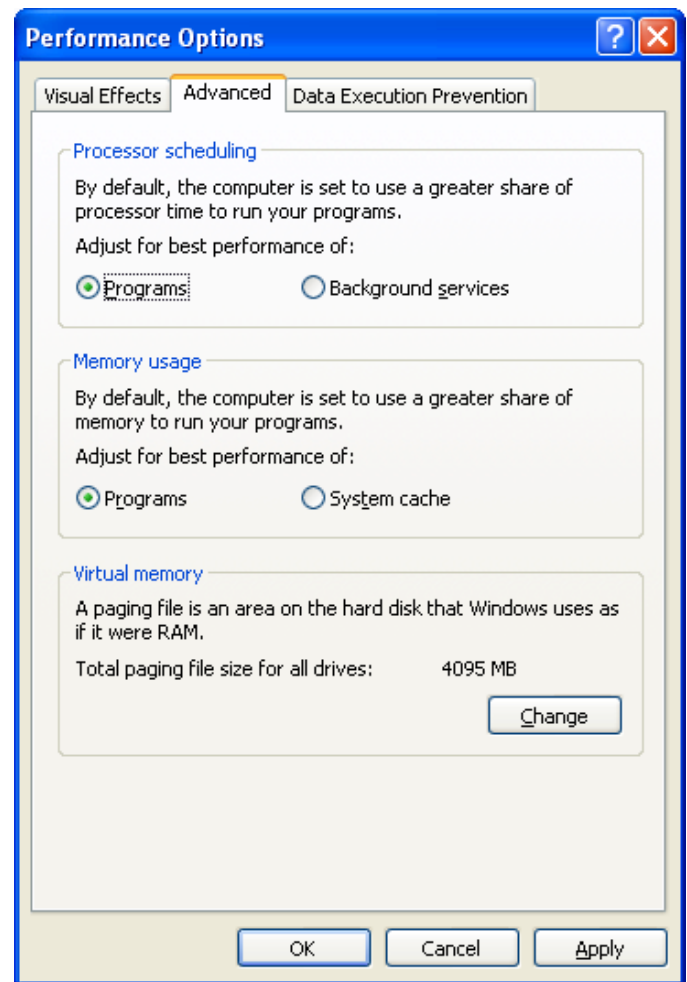
In the Performance sub-window, click on the "Settings" button.



The Performance Options window appears.
Click on the "Advanced" tab.

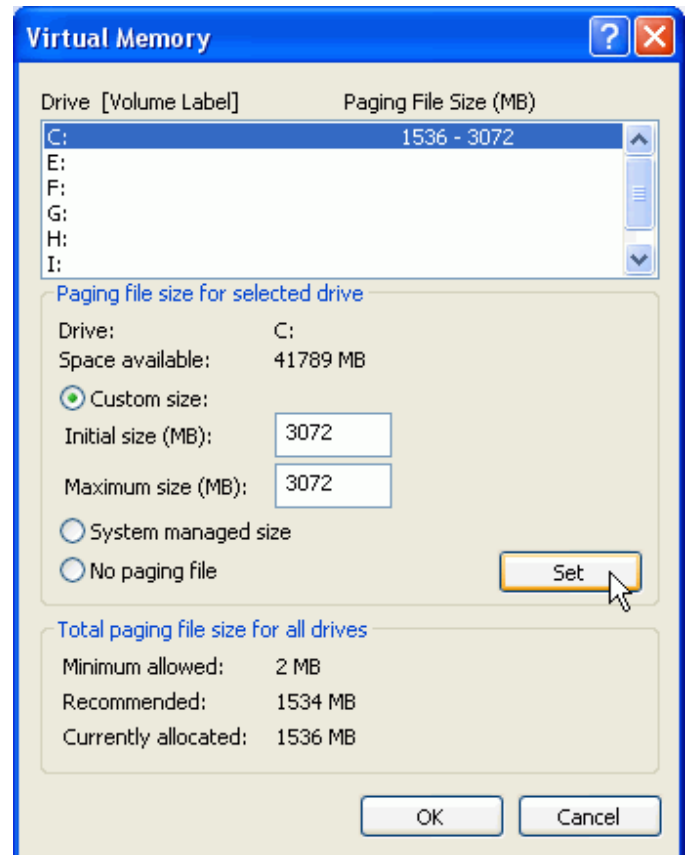
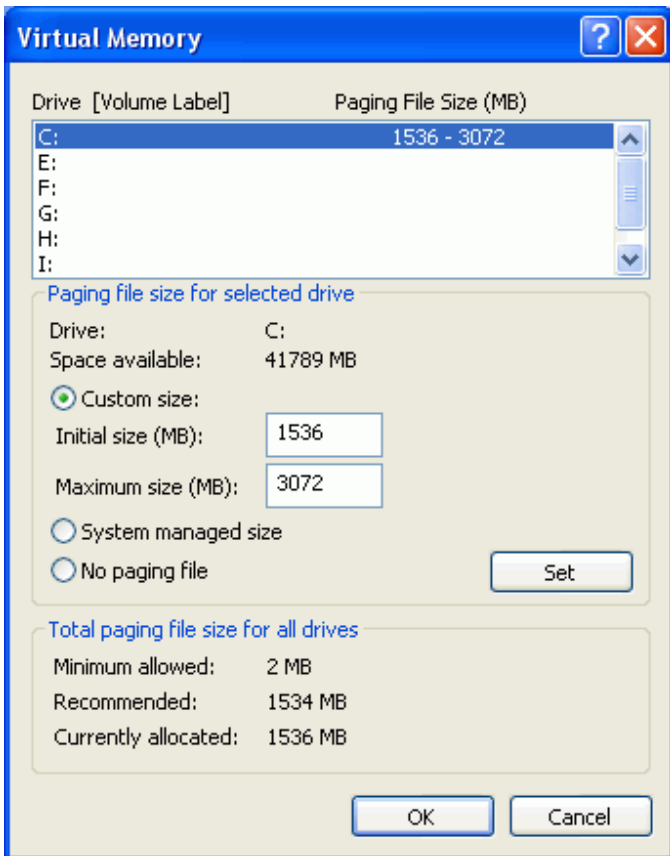


In the Virtual memory sub-window, click on the "Change" button.



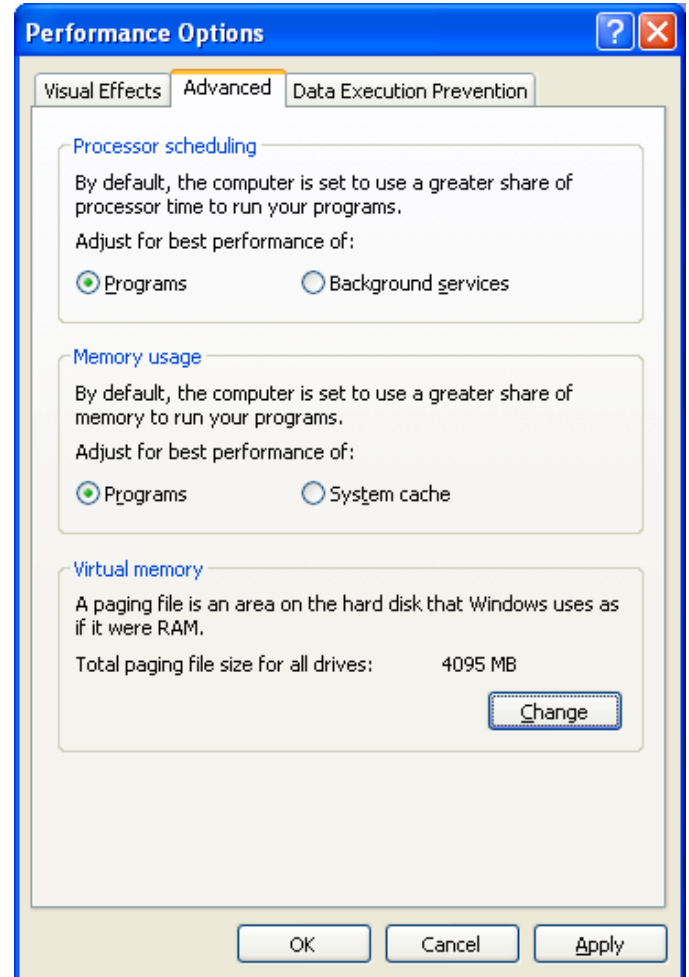
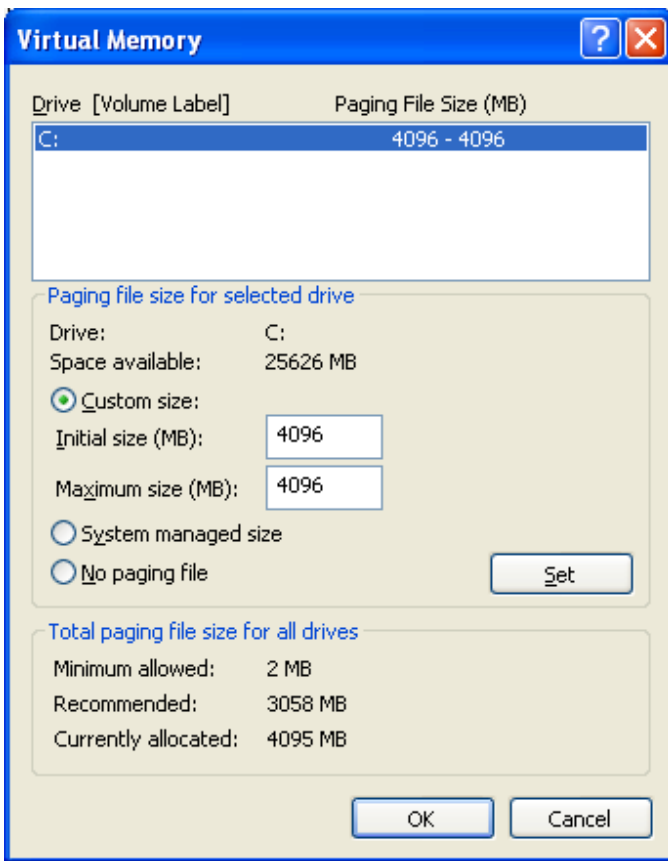
Here are the default values set by Windows XP for the amount of RAM I have in my computer. Notice in the little window that the C: drive is highlighted showing that is the drive with the swap file, and that the size range of the swap file is also shown.

The "Custom size" option is already selected. Setting the "Initial size" and "Maximum size" to the same values increases efficiency and performance since Windows does not have to manage re-sizing the swap file. Notice that the "Set" button - not the "Ok" button - needs to be clicked for the changes to actually be accepted.

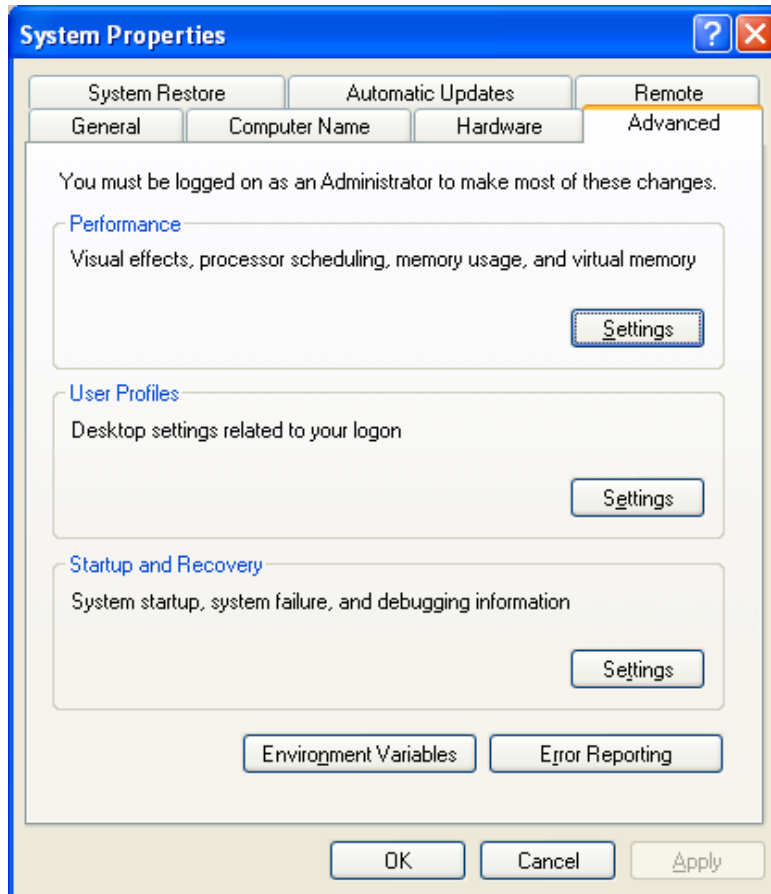


Notice that the highlighted entry has changed to show the new configuration. Click on the "Ok" button.

Clicking on the "Ok" button again...



... and then again takes us back to the desktop.



Restart the computer for the changes to go into effect.